



Volume 29, Issue 9  
October 2019

### Board Meetings

Chapter Board Meetings are typically held on the third Wednesday of the month.

Upcoming meetings:

- **November 20**  
12 p.m. Board meeting SLO  
Brew the Rock

### In This Issue:

- President's Message
- Photos from the Annual Chapter Golf Tournament
- Sponsor Spotlight: CLCA Insurance Solutions

[www.clcaslo.org](http://www.clcaslo.org)

# SLO PRESS



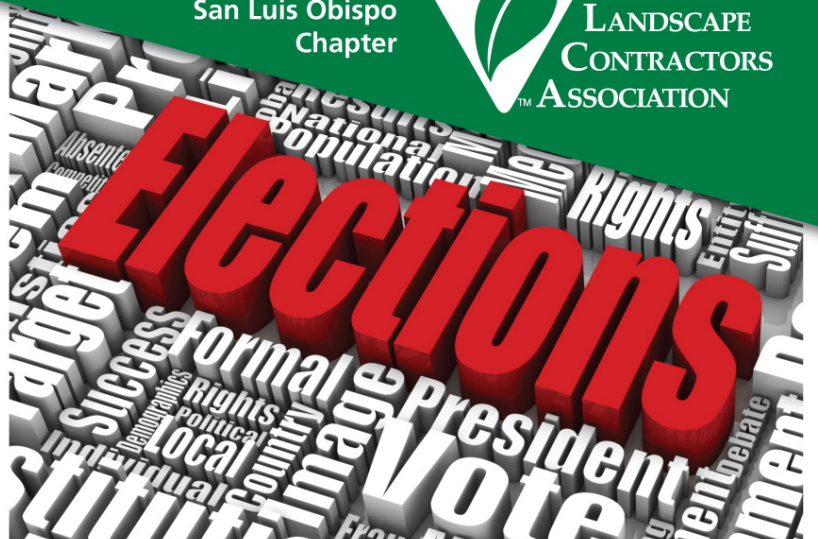
San Luis Obispo Chapter  
California Landscape Contractors Association  
Representing the Landscaping & Irrigation Industry

Join the  
San Luis Obispo  
Chapter



JOIN US!  
Thursday,  
November 7  
6:00 - 8 p.m.

LOCATION  
Tin City Cider  
3005 Limestone Way  
Paso Robles, CA



Join us for a membership mixer and the Annual Elections to elect our Board of Directors for the upcoming year.

The proposed slate of officers for 2020 is as follows:

- President: Matt Hames – Landscape Development
- VP of Events: Ian Parker – Madrone Landscapes
- VP of Membership: Open
- VP of Legislation: Paul Wait – Zurn Industries
- VP of Education: Open
- Secretary: Open
- Treasurer: Pat Connelly – St. Francis Landscape
- Associate Member Rep: Open

## CLCA SLO Golf Tournament Fun!

See page 6-7 for more photos.



## 2019 San Luis Obispo Chapter Officers

President ..... Evan Moffitt, SiteOne Landscape Supply ..... EMoffitt@siteone.com ..... 805-616-9858  
 Immediate Past President.... Mike Kneeskern  
 VP Membership ..... Gary Abney, AirVol Block ..... gabney@airvolblock.com.....805-543-1314  
 VP Programs ..... Ian Parker, Madrone Landscapae..... Ian@madronelandscapes.com ....805-466 – 6263  
 VP Legislation..... Taylor Boyle, Purlieu Landscape ..... taylor@purlieulandscapes.com.....805-709-6319  
 Secretary ..... Matt Hames, Landscape Development.....mhames@landscapedevelopment.com 805.722.1955  
 Treasurer..... Pat Connelly, St. Francis Landscape..... stflandscape@gmail.com.....805-235-1859  
 Associate Member Rep..... Paul Wait, Zurn Wilkins..... Paul.Wait@Zurn.com.....  
 Editor ..... Jerrie Beard, Beard & Associates ..... info@beardassociates.com..... 530-621-1701

## CLCA Board of Directors

President .....Elizabeth Burns.....(310) 831-6132  
 President-Elect .....Regan Barry ..... (831) 438-4747  
 Past President.....Aaron Huxley ..... (415) 256-1711  
 Secretary/Treasurer .....Andrew Simpson... (916) 721-1635  
 Executive Director .....Sandra Giarde..... (916) 830-2780

### DIRECTORS

Legislation .....Megan Rios ..... (661) 835-9259  
 Education .....Lindsay Ono ..... (661) 395-4938

Membership .....Peter Rosen ..... (510) 697-2460  
 Events .....Dan Dvorak..... (310) 237-5474  
 Resource Management .Paul Hansen..... (714) 235-1427  
 Associate Member .....Chris McNairy..... (707) 933-0488  
 Co-Director Chapter Pres. Council North  
 Henry Buder, Jr., CLP, CLT .....(415) 460-0381  
 Co-Director Chapter Pres. Council South  
 Eric Watanabe .....(818) 993-0200

## SLO CLCA Past Presidents

<b>2014-15</b> Mike Kneeskern Central Coast Landscape Products	<b>2009-10</b> Erik Wolting All Seasons Gardening & Landscaping	<b>2005-06</b> Erik Wolting All Seasons Gardening & Landscaping	<b>1998-2001</b> Bruce Courter Day Star Enterprises, Inc.	<b>1994</b> Duane Morris Duane Morris Landscape Designer/Contractor
<b>2012-13</b> David Brown Mari Landscaping	<b>2007-08</b> Jim Trask California Water Shapes	<b>2004</b> John Doyle J Doyle Landscaping	<b>1996-98</b> Lloyd Gracey Pacific Coast Landscapes	<b>1993</b> John Ruggiero Arcadian Gardens
<b>2011</b> Aaron Huxley Hunter Industries		<b>2002-03</b> Pat Connelly St. Francis Landscape	<b>1995</b> Danté D'Alfonso D'Alfonso's Landscape	<b>1991-92</b> Bruce Courter Day Star Enterprises

## Water Management Certification

Water budgeting is now enforced by law by the Model Water Efficient Landscape Ordinance (MWELO). Becoming a Certified Water Manager is essential for your business.

Hiring a Certified Water Manager will enable you to reduce your water waste, reduce your water bills and save money. Through efficient, proven industry methods of water management, our water managers have been able to save their clients significant amounts of water and money.

For more information visit [clca.org/water-pro//index.php](http://clca.org/water-pro//index.php)



**WHOLESALE**  
 REDWOOD • FIR • CEDAR  
 BARK • SOIL AMENDMENTS  
 ERRO-CONTROL STRAW  
 PLAYGROUND FIBER

# ROSSI TRANSPORT SERVICE

STEVEN L. ROSSI  
 VICE PRESIDENT  
 RES. (805) 466-6195

PHONE (805) 434-2884  
 (800) 321-3092 • FAX (805) 434-0877  
 P.O. BOX 120 • ROSSI ROAD  
 TEMPLETON, CA 93465

## Soil Analysis Service

- National Independent Certified Lab
- Analysis Recommendations with Graphics
- Reports can be sent via email or U.S. mail
- Fast Turnaround • Consulting Services

**GRO POWER<sup>®</sup> INC.**

[www.gropower.com](http://www.gropower.com)

909-393-3744 • FAX 909-393-2773 • 15065 Telephone Ave., Chino CA 91710



*Serving your irrigation needs since 1950*

PASO ROBLES ★ SAN LUIS OBISPO ★ ARROYO GRANDE ★ SANTA MARIA ★ BUELLTON

## president's message



*Evan Moffitt, CLCA-SLO President  
Site One Landscape Supply*

I hope everyone is having a great fall. There are a lot of things going on in California. We're having a late fire season (pray for everyone's safety). There have been planned power outages all over California, fortunately none that I know of in our area. Maybe the Central Coast has done a good job with our fire management? We have been very fortunate on the Central Coast to not have been as affected by forest fires as other areas in the state.

What's new in the industry? There has been a TON of action with the banning of Glyphosate. Have you seen the TV ads,

Facebook ads, etc? It has been a windfall of litigation for a product that is less toxic than most. I didn't say it wasn't toxic... Just that there are other herbicides that are not as widely known. What are you doing? Organic? Foam? Burning weeds with flame throwers? How about battery operated equipment? Is it any good? Next year we are planning a Landscape Technology Summit. These will be hot topics.

We just wrapped up one of our biggest golf tournaments yet! Congratulations to our winners. We had a lot of familiar faces and a bunch of new ones. We were able to generate over \$1300 dollars for the Cal Poly Colligate Landscape Team for their upcoming trip to the National Competition. We had a huge amount of vendor support. Thank you again to all those that contributed. There were tons of highlights but here are a few.

Have you ever done a backflow toss? Thanks to Paul Wait from Zurn Industries everyone got their chance. Congrats to Shantelle from Belgard who won the longest drive OPPOSITE handed. Everyone had a hard time with that one. I may or may not have hit one of the guys from Engel and Grey on one of my drives. All in all it was another fun event whether

you came to golf or just hang out.

Coming up we have our general elections on November 7th, 6-8PM at Tin City Cider. Come join us for a social event, network, and elect next year's board. We are still in need of a few board members if you are interested, or willing, to be involved. Have a voice in what we do and make the most of your membership. Here are our projected nominees and the board positions available. Please remember that these are only board recommendations and we are all very accommodating. If you have something that you are passionate about please let us know. Also, employees of member companies are encouraged as well.

- President: Matt Hames – Landscape Development
- VP of Events: Ian Parker – Madrone Landscapes
- VP of Membership: Open
- VP of Legislation: Paul Wait – Zurn Industries
- VP of Education: Open
- Secretary: Open
- Treasurer: Pat Connelly – St. Francis Landscape
- Associate Member Rep: Open

- 24 Hour Approval
- Competitive Rates
- 90% Approval Rate
- Up to 5 or 6 Year Loans
- No Pre-payment Penalties
- Flexible Acceptance Policy
- Loan Refinancing Available

**BIRCH**  
FINANCIAL, INC

**FINANCING VEHICLES & NEW & USED EQUIPMENT**

Call Janet Schoenfeld at  
**(800) 959-3701**  
or visit  
[www.birchfinancial.net](http://www.birchfinancial.net)

**~KURAPIA~**

**NEW**

**DROUGHT TOLERANT GROUNDCOVER SOD**

- A turfgrass alternative changing the industry
- No need to sacrifice lawns to save water on landscape
- Grows low to the ground rarely exceeding 1"
- Dark green year round, and if left un-mowed produces small white flowers May-November

**WEST COAST TURF**

Ask us about other water saving turfgrasses, too!

[westcoastturf.com](http://westcoastturf.com)  
888/893-8873

# Thank You to Our Sponsors and Players for Making the 2019 Golf Tournament a Success

## Low Gross:

Ike Haupu  
Felix Negrete  
Brandon West  
Chuck West

## Low Net:

Mike Kneeskern  
Ian Parker  
Coner Boan  
Shawn Souza

## Closest to the Pin:

Shawn Souza  
Eric Wantanabe  
Sam Perez

## Longest Drive:

Ike Haupu

## Longest Drive

## Opposite Handed:

Shanelle

## Platinum Sponsors:

Earthsavers  
Gentile and Associates

## Gold Sponsors:

Turf Star  
Netafim  
Boral / El Dorado Stone  
Quinn CAT

## Hole Sponsors:

Zurn Industries  
Central Coast Landscape Products  
Troesh Coleman Pacific  
Bayer Turf and Ornamental  
Best Fertilizers  
Air Vol Block  
Engel and Grey  
Rainbird  
Hunter/Fx  
Belgard  
CLCA Insurance Solutions  
Landscape Contractors Insurance Services  
American Muffler  
J. Wilkins Artscape





The big winner of the recent golf tournament was the Cal Poly Colligate Landscape Team. The tournament raised \$1300 for their upcoming trip to the National Competition.

Thank you to all who participated and to our fantastic sponsors!



**Christopher Voelker**  
Phone (831) 674-3058  
FAX (831) 674-3163

P.O. Box 248  
Greenfield, CA 93927  
**Sod Orders 1-800-525-8877**  
Web: [www.greenfieldsturf.com](http://www.greenfieldsturf.com)



**ELLEN MONTALBANO**  
ACCOUNT EXECUTIVE

CA LIC # 0755906

1835 N. Fine Ave.  
Fresno, CA 93727  
emontalbano@lcisinc.com  
[www.lcisinc.com](http://www.lcisinc.com)  
P (800) 628-8735 Ext. 508  
C (650) 492-1774  
F (800) 440-2378

Specialized Insurance & Business Services for Members of the Green Industry

## Chapter Sponsor Spotlights



### CLCA Insurance Solutions

At CLCA Insurance Solutions™, the members of California Landscape Contractors Association can find a total insurance solution. We are here working hard to keep your exposures to risk to a minimum. CLCA Insurance Solutions is CLCA's ONLY endorsed program and provides members with competitive insurance placement while providing support beyond the quoting and binding experience. Our extensive knowledge of insurance, expertise in risk management, dedicated and personal service enables us to be effective in addressing clients' needs and developing appropriate solutions to fill those needs. Whether you need a quotation, to make a policy change, have a question about billing, or need to report a claim; our professional service staff will be there to assist you.

We at CLCA Insurance Solutions™ help protect your substantial assets and secure your future by providing individualized attention to your account. As your business grows, your insurance needs become more complex. Our dedicated team of personable and knowledgeable professionals will help you determine the appropriate levels of protection your business — your future — requires.

Landscaping companies need insurance that adapts to the fluxes of a seasonal business. In peak season, you need a carrier that is flexible with vehicle and equipment coverage or when your payroll is lower in the slow season, you need that reflected in your premiums. We can advise you on how to make that happen. When you need to make changes during the season, you need an agent that responds quickly. You need someone that answers your phone calls! And you need an agent that understands the local environment and can match coverage options to your situation.

### Who we are and are not:

We are not “fast food” and “one-size-fits-all.” We make a careful analysis of the risks unique to you and your company. Our staff is knowledgeable and has extensive experience and will discuss the best way to minimize your risks and close possible gaps in your coverage. We will provide a custom-fit insurance plan based upon your risk profile and your budget.

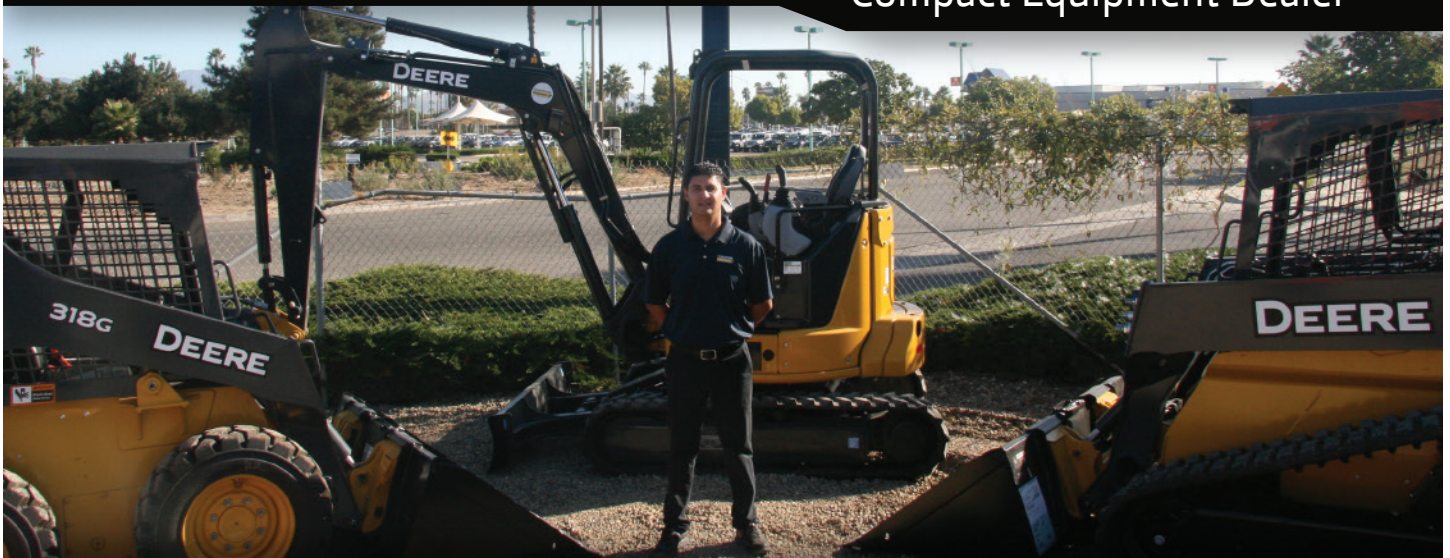
### Services for Landscape Firms

- Contract review assistance for insurance compliance
- Coverage analysis and review
- Loss Control and Claim reduction analysis
- Quick turnaround for insurance proposals and coverage options
- 24/7 available for Certificates of Insurance & Auto Identification Cards
- Access to monthly and quarterly on-line Risk Management tools

Contact CLCA Insurance Solutions at (855) 662-2522, or by email at [clca.insurance@arm-i.com](mailto:clca.insurance@arm-i.com).

Sales • Rentals • Parts • Service

Your Southern California  
Compact Equipment Dealer



Call: Albert Fernandez at (805) 256-5767



**COASTLINE**  
**Equipment**

[www.coastlineequipment.com](http://www.coastlineequipment.com)

OXNARD  
1930 E. Lockwood St.  
Oxnard, CA 93036  
(805) 485-2106

SANTA MARIA  
1950 Roemer Place  
Santa Maria, CA 93454  
(805) 922-8329

SYLMAR  
12435 Foothill Blvd.  
Sylmar, CA 91342  
(818) 890-3353

# Thank you to our 2019 sponsors

Thank you to the following companies for their generous support of the CLCA San Luis Obispo Chapter. Please support the firms who support our chapter.



**0% FOR 60 MONTHS**  
**ON SELECT NEW CAT® MACHINES\***  
**WITH A 2-YEAR STANDARD WARRANTY\*\***

**0% FOR 60 MONTHS**  
**WITH ZERO DOWN**  
**& 2-YEAR STANDARD WARRANTY\*\***  
**ON SELECT NEW CAT® MACHINES\***

**LET'S DO THE WORK.™**

Grow your business with the quality you expect of a CAT® machine and the unmatched support of Quinn Company.

**GET IN ON THE SAVINGS TODAY.**

\*For complete details contact Quinn Company. Offer valid from Oct. 1, 2019 to Jan. 31, 2020 only on new qualifying machines manufactured by Caterpillar Inc. Offer subject to machine availability. Offer may change without prior notice and additional terms and conditions may apply.

Contact David Needelman for complete details.



**David Needelman**  
 (805) 310-9296  
 dneedelman@quinncompany.com

**Quinn Company**  
 1655 Carlotti Dr.  
 Santa Maria, CA 93454



[QuinnCompany.com](http://QuinnCompany.com)